

Lakes of Biological Significance

Source: DNR

Outstanding

High

Impaired Streams

Bacteria

Biology

Dissolved Oxygen

Impaired Lakes (Nutrients)

Planning Regions

Current Land Cover

Source: NLCD 2016

Open Water

Developed

Barren

Forest: Deciduous

Forest: Evergreen

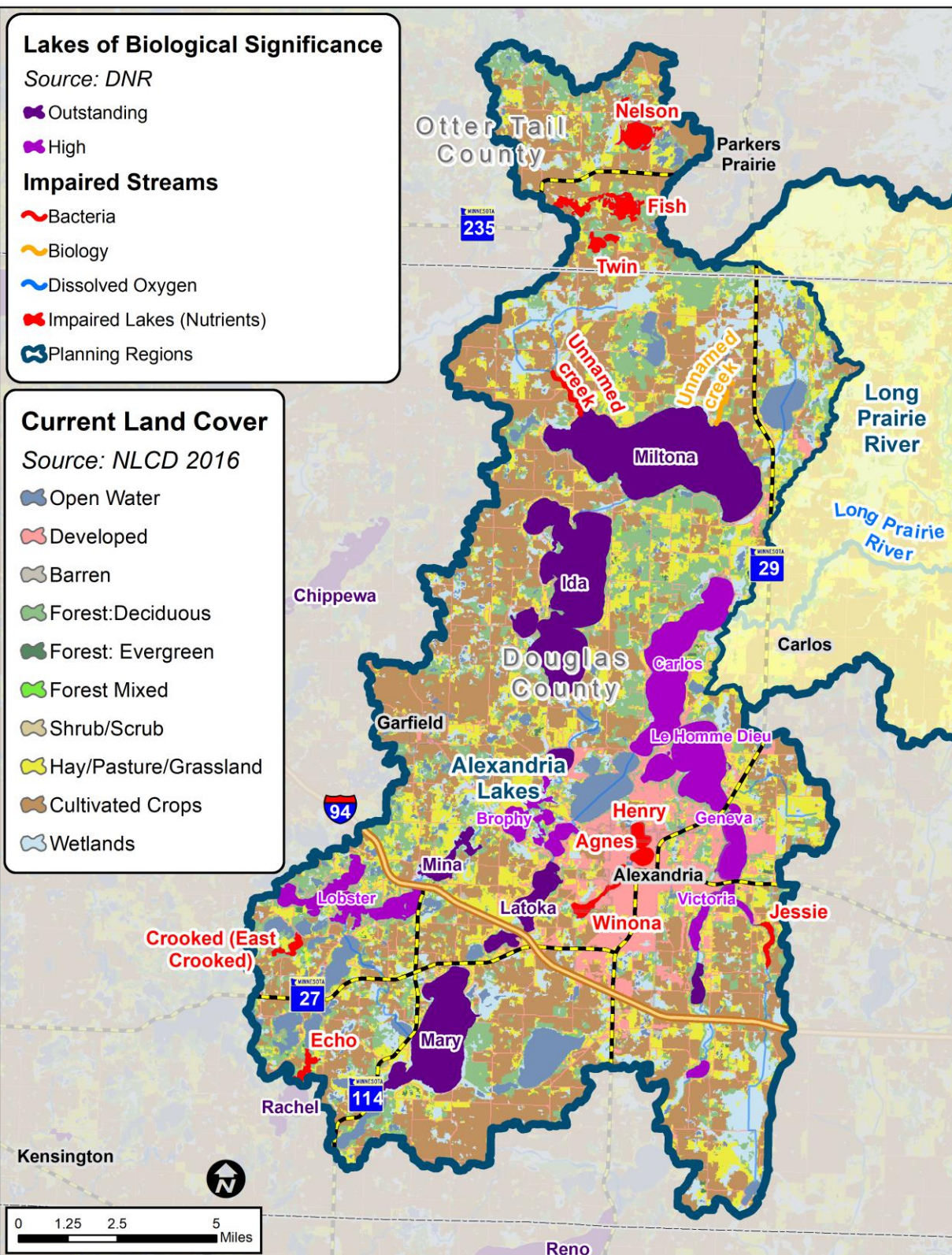
Forest Mixed

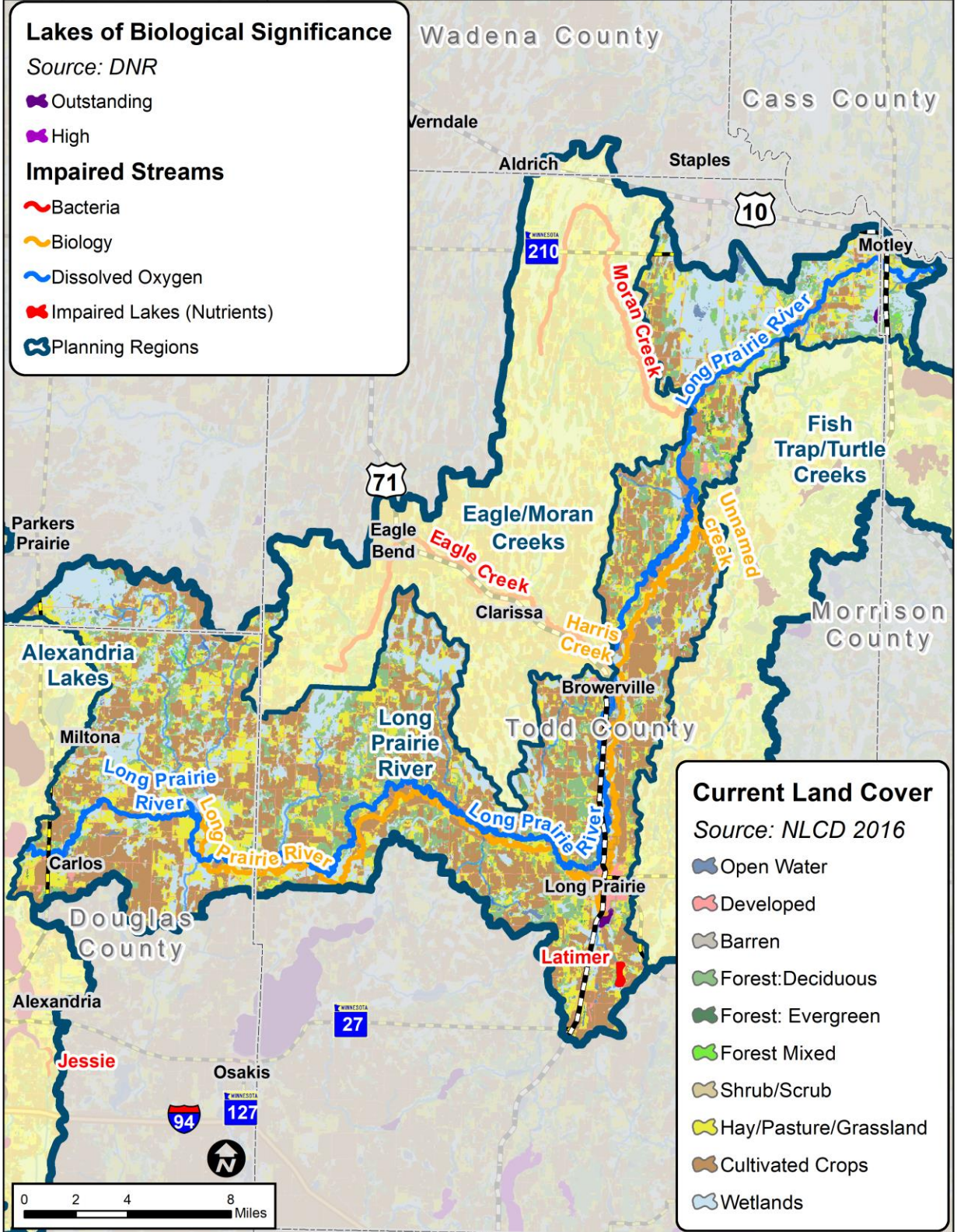
Shrub/Scrub

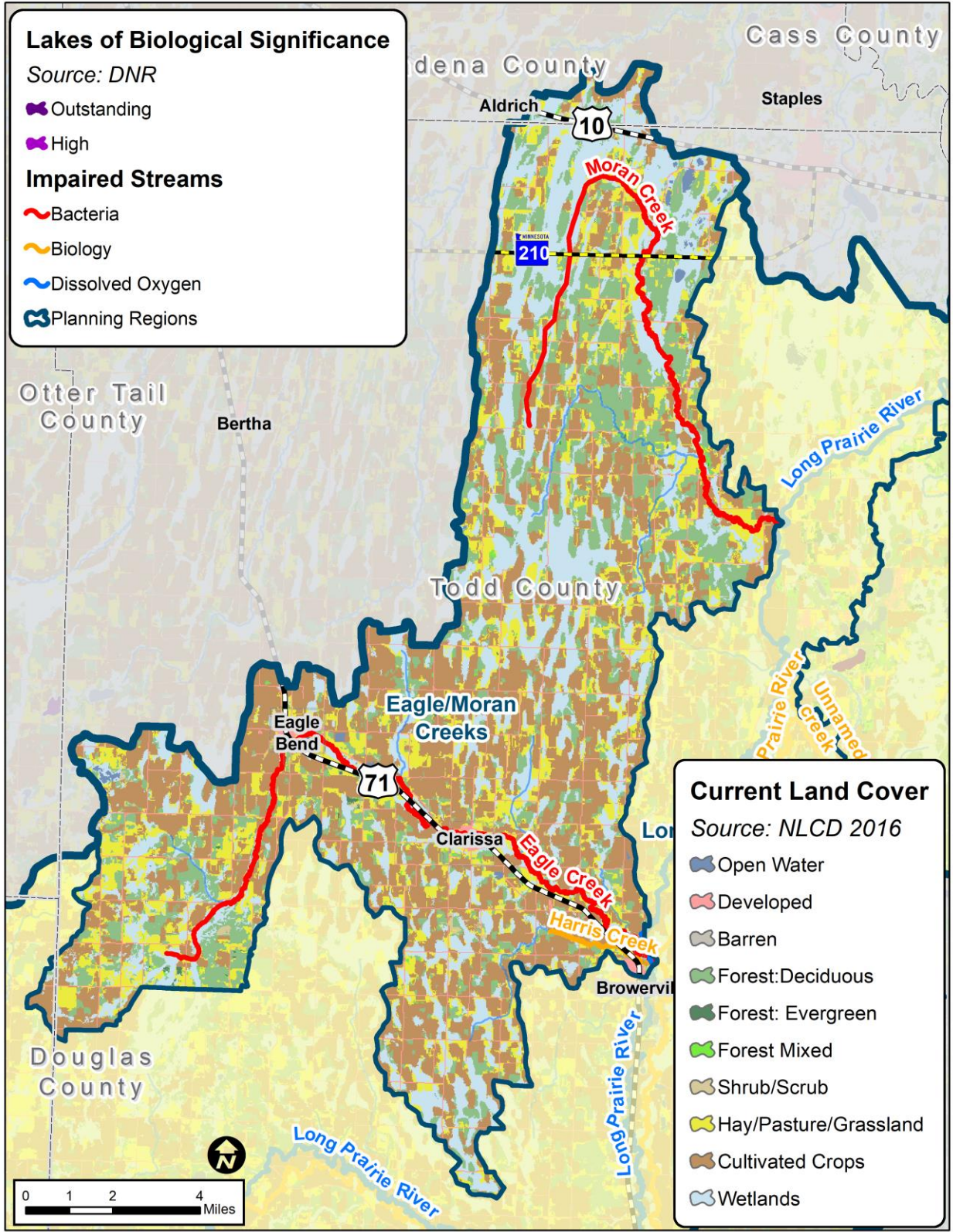
Hay/Pasture/Grassland

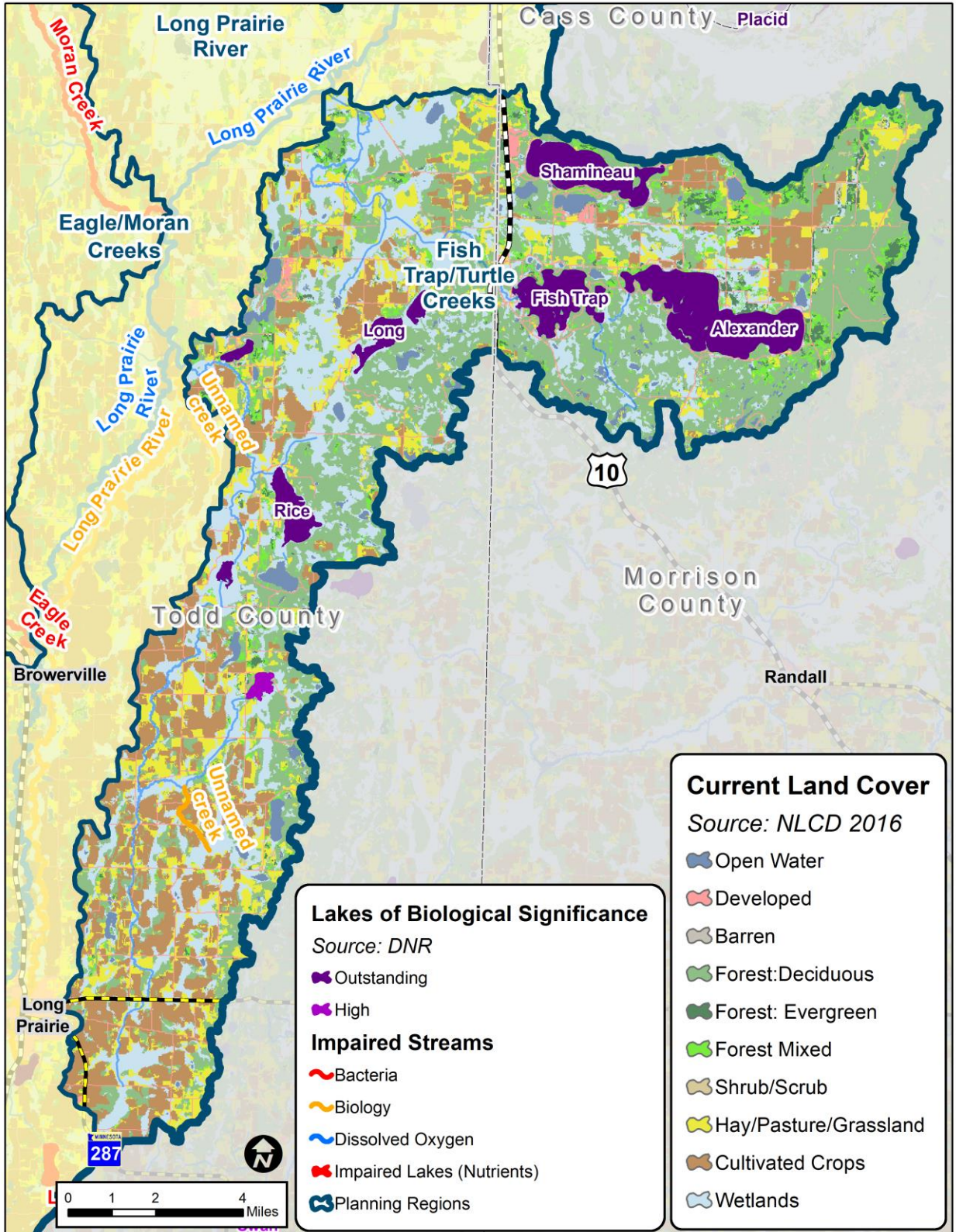
Cultivated Crops

Wetlands









Current Land Cover
 Source: NLCD 2016

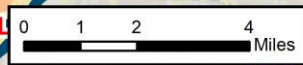
- Open Water
- Developed
- Barren
- Forest: Deciduous
- Forest: Evergreen
- Forest Mixed
- Shrub/Scrub
- Hay/Pasture/Grassland
- Cultivated Crops
- Wetlands

Lakes of Biological Significance
 Source: DNR

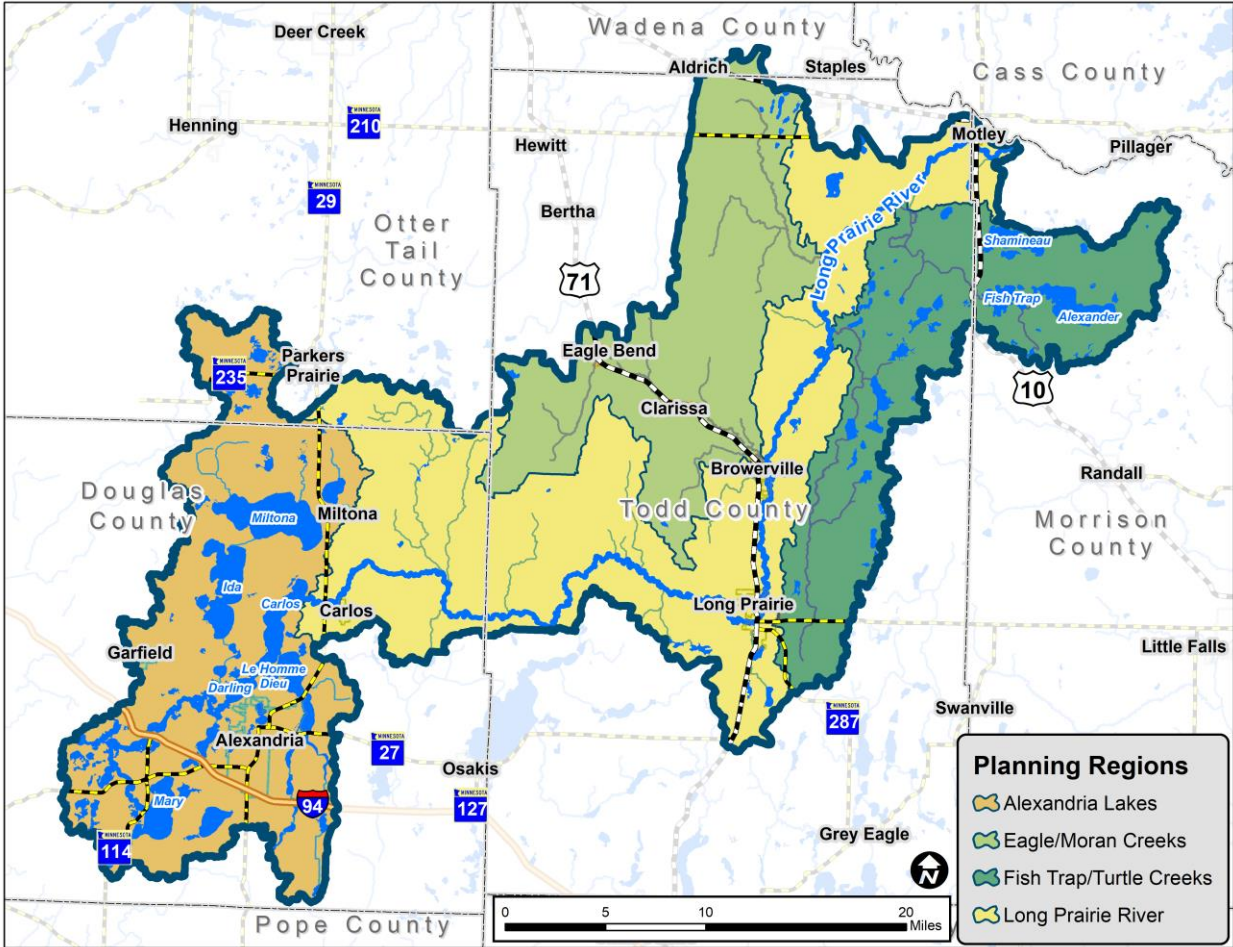
- Outstanding
- High

Impaired Streams

- Bacteria
- Biology
- Dissolved Oxygen
- Impaired Lakes (Nutrients)
- Planning Regions



287



Planning Regions

-  Alexandria Lakes
-  Eagle/Moran Creeks
-  Fish Trap/Turtle Creeks
-  Long Prairie River

